

Concrete Repair and Restoration

Vertical and Overhead
Deck Repair and Protection



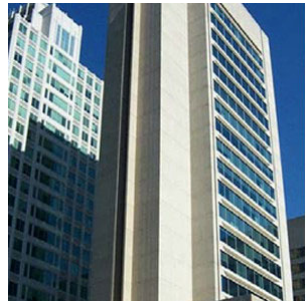
Masonry Repair and Restoration

Natural and Cast Stone,
Concrete and Brick
Terracotta



Protective Coatings

Vertical
Horizontal and Overhead



Exterior Wall Systems

Direct Applied
Reinforced Metal



Surface Preparation

Conpro Start

Spray, roller or brush applied, water based consolidant, used to stabilize and strengthen concrete, masonry and stone.

Where to Use

Restore surface integrity and strengthen substrate prior to application of coating or repair materials.

Coverage/Yield

80-150 ft.²/gal. depending on porosity of treated surface.

Apply a test sample to determine actual coverage.

Packaging

1 and 5 gallon containers



Surface Preparation

Conpro ECB *Electro-Chemical Barriers*

Brush or spray applied, water based, single component, zinc rich, anti-corrosion coating and long open time bonding primer.

Where to Use

Protect reinforcing steel and metal embedded in concrete against corrosion

How to Apply

Brush or spray

Coverage/Yield

Reinforcing Steel

1 gal - 900 ft. of #8 rebar.

5 gal. - 4500 ft. of #8 rebar.

Concrete

1 gal - 230 ft.² @ 7 mils.

5 gal. - 1150 ft.² @ 7 mils.

Packaging

1 and 5 gallon plastic containers.



Surface Preparation

Conpro Primer

Spray, roller or brush applied, long open time, water based bonding primer. Meets requirements of ASTM C882.

Where to Use

Bonding primer for overlays and repair materials, to hardened concrete.

How to Apply

Spray, roller or brush

Coverage/Yield

150-200 ft²/gal. depending on porosity of treated surface.

Packaging

1 and 5 gallon plastic containers



Concrete Repair Mortars

ISR CM

Color matched repair mortar for cast and pre-cast concrete utilizing ISR (Internal Stress Relief) technology. Available in 23 standard colors and custom color matching.

Where to Use

Protective repairs to vertical and overhead surfaces that match the color of the parent concrete.

How to Apply

Margin Trowel, red sponge float.

Coverage/Yield

Theoretical Yield

Yield per Pail	Repair Depth	Square Feet
0.42 cubic feet	1/2 Inch	10.08
0.42 cubic feet	1 Inch	5.04
0.42 cubic feet	1.5 Inches	3.36
0.42 cubic feet	2 Inches	2.52

Packaging

5 gallon containers. 50 lbs.



Concrete Repair Mortars

Conpro Set

Trowel applied, single component, polymer-modified cementitious repair mortar with ECB-Tech corrosion Protection. **Do not add K88 Admixture.**

Where to Use

Structural and protective repairs to vertical, overhead and horizontal concrete.

How to Apply

Margin Trowel, red sponge float.

Coverage/Yield

0.42 ft.³/50lbs.

0.65 ft.³ when extended with 30 lbs. of 3/8 inch aggregate

Packaging

50 lbs. paper bag, 10 lbs. and 50 lbs. plastic pails



Concrete Repair Mortars

Conpro Quick Shot

Single component, fast setting, high build, low shrinkage, cementitious repair mortar. **Add K88 Admix for polymer modified repair mortar.**

Where to Use

Fast repairs to vertical, overhead and horizontal concrete, above or below grade.

How to Apply

Margin trowel, Red sponge float

Coverage/Yield

0.44 ft.³/50 lbs.

0.67 ft.³ when extended with 30 lbs. of 3/8 inch aggregate.

Packaging

50 lbs. paper bags.



Concrete Repair Mortars

Conpro One Shot 2C

Trowel or pump applied, two component, polymer modified, Portland cement material for horizontal applications up to 1/2 inch.

Where to Use

Resurface balconies, parking decks, industrial floors, loading docks and ramps.

How to Apply

Finishing trowel or Pool trowel

Coverage/Yield

50 ft.²/50 lbs. @ 1/8 inch.

Packaging

50 lbs. paper bags and 1 gallon K88 Admixture.



Concrete Repair Mortars

Forment

Pump/pour, shrinkage compensated, Portland cement repair mortar, with ECB-Tech corrosion protection. **Do not add K88 Admixture.**

Where to Use

Formed structural and protective repairs to vertical, overhead and horizontal concrete from 1-6 inches deep.

How to Apply

Pump/pour

Coverage/Yield

0.41 ft.³/50lbs unit.

0.65 ft.³ when extended with 30 lbs. of 3/8 inch aggregate

Packaging

50 lbs. paper bag; and 1 gallon Forment admix



Concrete Repair Mortars

Gun Shot LPS

Low pressure, wet process spray applied, fiber reinforced, silica fume enhanced, repair mortar with ECB-Tech corrosion protections.

Do not add K88 Admixture.

Where to Use

High production vertical and overhead concrete repairs. Wet process minimizes dust and rebound. Spray or trowel.

How to Apply

Trowel or spray applied

Coverage/Yield

0.41 ft³/50 lbs

Packaging

50 lb paper bag



Concrete Repair Mortars

ISR V/O

Portland cement based concrete repair material with ECB-Tech corrosion protection. ISR technology (Internal Stress Relief). **Do not add K88 Admixture.**

Where to Use

Protective repairs to vertical and overhead concrete. Single component, low shrinkage.

How to Apply

Trowel

Coverage/Yield

0.41 ft³/50 lb bags - 9ft² @ 1/2 inch.

Packaging

50 lb paper bag



Concrete Repair Mortars

ISR Ag

Durable, crack resistant repair material utilizing ISR (Internal Stress Relief) technology with ECB-Tech corrosion protection. **Do not add K88 Admixture.**

Where to Use

Pour, pump or hand patch material for parking and plaza decks, balconies and marine structures.

How to Apply

Trowel in horizontal, form & pour/pump for vertical/overhead.

Coverage/Yield

0.49 ft.³/60 lb. bag

Packaging

60 lb paper bags.



Masonry Repair and Restoration

Matrix

Trowel applied, cementitious repair mortar, formulated to be compatible with the color and physical properties of parent material. Available in 14 standard colors and custom color matching.

Where to Use

Repair and reconstruct natural and cast stone, terracotta, and brick. Unique on-site color matching by trained, certified technicians.

How to Apply

Margin trowel

Coverage/Yield

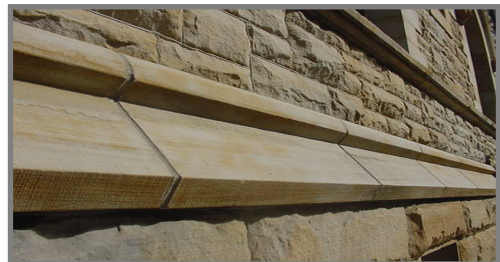
Theoretical Yield

Packaging

5 gallon containers. 50 lbs



Yield per Pail	Repair Depth	Square Feet
0.5 cubic feet	1/2 Inch	12.00
0.5 cubic feet	1 Inch	6.00
0.5 cubic feet	1.5 Inches	4.50
0.5 cubic feet	2 Inches	3.00



Masonry Repair and Restoration

Matrix TR

Brush applied, polymer modified, cementitious repair mortar for thin repairs to natural and cast stone. Available in 14 standard colors and custom color matching.

Where to Use

Thin, protective repair to brownstone, sandstone, limestone, cast stone, terracotta and concrete.

How to Apply

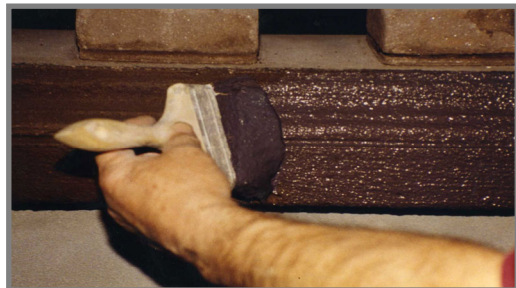
Brush or sponge float

Coverage/Yield

10 lb. kit—20 ft² @ 1/16 inch.

Packaging

10 lb. kit contains 8.36 lbs of powder and 2.1 lbs of K88 Admix in plastic pails.



Masonry Repair and Restoration

RePoint

Meets the requirements of ASTM C387 and C270 for the respective compressive strength of Type O and Type N mortars. Available in 14 standard colors and custom color matching.

Where to Use

Available in both Type O and Type N formulations and can be used anywhere these types are specified.

How to Apply

Repointing Tool

Coverage/Yield

Packaging

50 lb plastic pail, 50 lb paper bag

Theoretical Yield

1 Bag/Pail (50 lb)	Joint Width	Joint Depth	Lineal Feet
1 Bag/Pail (50 lb)	1/4 inch	5/8 inch	442
1 Bag/Pail (50 lb)	3/8 inch	3/4 inch	245
1 Bag/Pail (50 lb)	1/2 inch	1 inch	138



Masonry Repair and Restoration

Injection Grout

Cementitious injection grout for the repair of hairline to 3/4 inch cracks in masonry and concrete. Available in 14 standard colors.

Where to Use

Repair and reconstruct brownstone, sandstone, limestone, cast stone, concrete, marble, granite, terracotta and brick.

How to Apply

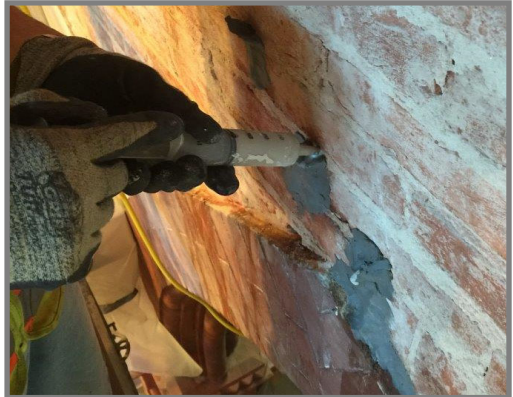
Injection syringe, modified bulk guns, or low pressure grout pump.

Coverage/Yield

0.25 ft³/30 lb pail.

Packaging

30 lb plastic pail.



Masonry Repair and Restoration

Terracotta Repair

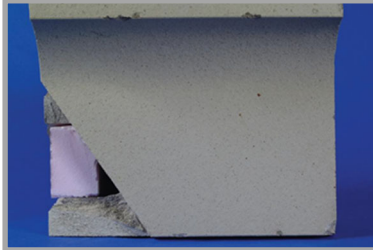
The repair of terracotta follows the same principles of proper stone and concrete repair. Achieving an aesthetically pleasing result requires the right materials, tools and excellent craftsmanship. Terracotta repair can be categorized as shallow repairs (glaze spall $<1/4"$) or deep repairs (bisque spall $1/2"$ +) below. The method of repair can vary slightly depending on the category.



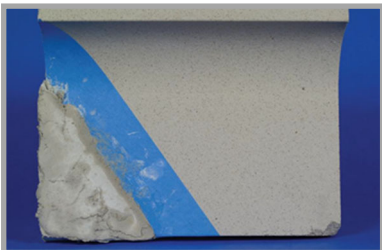
Bisque Spall Repair ($1/2"$ +)



STEP 1 – Match the primary color of the terracotta using the Matrix fobs. Make three 'pucks', one the color closest to the terracotta, one a shade darker and one a shade lighter. The finish must be troweled smooth.



STEP 2 – Cut out the damaged area (minimum $1/2$ inch deep) so that the area to be repaired will be a geometric shape. In this case foam insulation was used to prevent filling the cavity with the repair mortar.



STEP 3 – Apply the color matched Matrix to the repair zone. Over build and allow to 'set' until thumbprint.



STEP 4 – Shave the Matrix with a miter rod or edge of trowel to final form. Finish the repair to match the existing surface of terracotta. In this case, the repair was finished smooth.

Masonry Repair and Restoration



STEP 5 – OPTIONAL

If Matrix material was color matched to parent terracotta, skip to **STEP 6**. If not, apply Terra-Color matched to the primary color of the terracotta. Shown above is Terra-Color paint, two 'pucks'. Brushes and sandpaper.

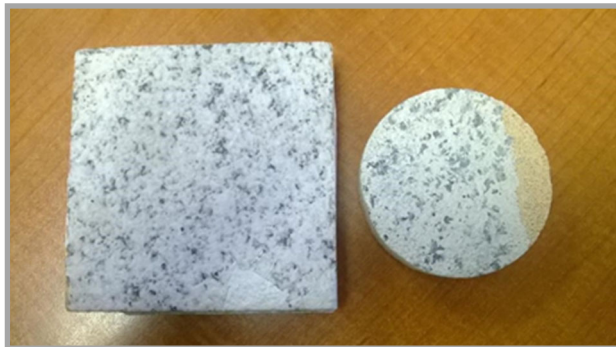


STEP 6 –

Apply Terra-Color matched to the accent color(s) and same pattern as to the parent stone. Allow to dry for a minimum of 12 hours. Apply Terracotta Finish to the repaired area either gloss or Matte to match the finish.

Glazed Spall Repairs (<1/4")

Glazed spall repairs should be attempted on damaged terracotta spalls of 1/4" or less. First inspect the glaze near the perimeter of the spall. Be sure it is still sound (well bonded) and free of biological growth. To minimize feathering, create a square shoulder for the spalled area. Following the instructions on the data sheet, apply Matrix TR (in 1/16" lifts if necessary) to repair the spall. The Matrix TR should be textured during finishing to match the existing terra cotta texture. The Matrix TR can be color matched to the existing terra cotta if desired. The repaired spall should be coated with Terra-Color and Terracotta Finish as described in Steps 5 and 6 above.



Protective Coatings - Base Coat

Plastermix

Trowel, sponge float, or spray applied, Portland cement finish coating for concrete.

Where to Use

Fill voids and provide a uniform finish to concrete. Apply before application of a coating for a uniform appearance.

How to Apply

Plastering trowel, Pool trowel, Green sponge float

Coverage/Yield

100 ft.²/50lbs. @ 1/16th inch.

Packaging

50 lbs. paper bag



Protective Coatings

Conpro Lastic

Roller, spray or brush applied, waterproof, elastomeric, crack bridging, anti-carbonation membrane.

Where to Use

Protect vertical concrete, block, brick, stucco and EIFS from water and contaminant entry. Will bridge minor cracking.

How to Apply

Roller, spray or brush

Coverage/Yield

100 ft²/gal. @ 15 mils. wet for smooth surfaces.

50-75 ft²/gal. @ 15 mils. wet for split block or rough surfaces.

Packaging

5 gallon containers.



Protective Coatings

Color Coat

Roller, spray or brush applied, 100% acrylic waterproof coating.

Where to Use

Enhance appearance and protect vertical and overhead concrete block, stucco, brick and synthetic stucco.

How to Apply

Roller, spray or brush

Coverage/Yield

200 ft.²/gal. @ 8 mils. wet.

120 ft.²/gal. @ 8 mils. wet. For split block or rough surfaces.

Packaging

5 gallon container.



Protective Coatings

Super Color Stain

Roller, spray or brush applied, water based opaque acrylic stain.

Where to Use

Enhance appearance and protect concrete, CMU, stucco, brick, and as a washable finish for Elastideck and Top Coat.

How to Apply

Roller, spray or brush

Coverage/Yield

250 ft.²/gal. @ 6 mils. wet.

150 ft.²/gal. @ 6 mils. wet for split block or rough surfaces.

Packaging

5 gallon container.



Protective Coatings

M3P Overcoat

Roller or brush applied, hybrid mineral silicate paint.

Where to Use

M3P Overcoat is used over properly prepared silicone, elastomeric and conventional masonry coatings. M3P Overcoat can also be applied to sound uncoated masonry surfaces in addition to coated surfaces.

How to Apply

Roller or brush

Coverage/Yield

170-300 ft²./gal.

100-180 ft²./gal. for split block or rough surfaces.

Packaging

5 gallon containers.



Protective Coatings - Diluent

M3P -X

Mineral silicate diluent.

Where to Use

Clear penetrating mineral silicate diluent used for creating semi-transparent finishes with M3P.

How to Apply

Refer to data bulletin for information.

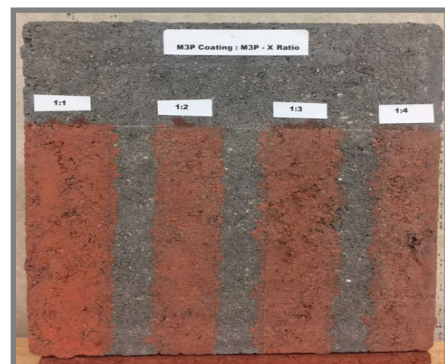
Coverage/Yield

Coverage rates vary considerably from substrate to substrate for all potassium silicate coatings due to surface texture and absorption rates of the masonry being coated. Apply a mockup to determine coverage rates for specific project.

M3P - X 150-300 ft²./gal.

Packaging

5 gallon containers. 45 lbs per pail.



Protective Coatings

M3P

Long term protection and enhanced aesthetics of concrete, masonry and stone. Opaque and semi-transparent finishes are obtainable.

Where to Use

Long term protection and enhanced aesthetics of concrete, masonry and stone. Used when objective is to blend substrate color variation to be more uniform.

How to Apply

Brush or roller applied, mineral silicate coating. Refer to data bulletin for more information.

Coverage/Yield

Coverage rates vary considerably from substrate to substrate for all potassium silicate coatings due to surface texture and absorption rates of the masonry being coated. Apply a mockup to determine coverage rates for specific project

170-300 ft²./gal.

Packaging

5 gallon containers. 45 lbs per pail.



Protective Coatings - Clear

Shield MX

Spray, roller or brush applied, penetrating aqueous silane/siloxane water repellent.

Where to Use

Vertical and horizontal concrete, concrete block, concrete pavers, natural stone, stucco and brick.

How to Apply

Low pressure spray, roller or brush.

Coverage

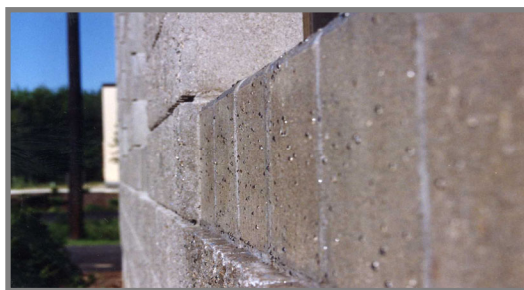
Concrete 125-175 ft²/gal

Concrete block 40-150 ft²/gal

Brick 100-175 ft²/gal.

Packaging

1, 5 and 54 gallon plastic containers.



Protective Coatings - Horizontal

Elastideck

Spray, roller or squeegee applied, acrylic modified, cementitious, flexible, waterproof membrane. Available in 14 standard colors.

Where to Use

Decorative coating for balconies, walkways, driveways, planters and parapets.

How to Apply

Spray, roller or squeegee

Coverage/Yield

160 ft.²/50 lbs. kit @ 50 mils.

Packaging

50 lbs. plastic container. 25 lbs of powder and 2 1/2 gallons of admix.



Exterior Wall Systems

Structural Skin

Trowel or spray applied, fiber reinforced, cement based structural coating. Refer to Conproco Exterior Wall Systems. Add 1 quart of K88 Admixture per 50 lb bag for curing.

Where to Use

Base coating for exterior wall systems over block, concrete, brick, exterior sheathing and plywood.

How to Apply

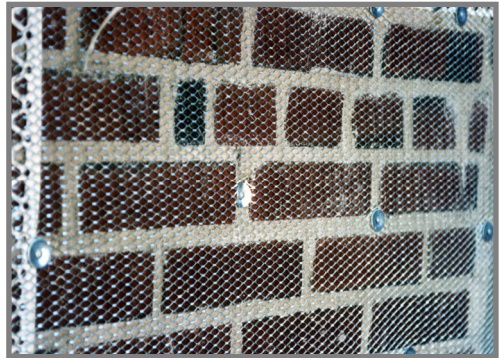
Plastering Trowel, Pool Trowel

Coverage/Yield

45 ft.²/50 lbs. @ 1/8 inch.

Packaging

50 lbs. paper bags



Exterior Wall Systems

Conpro One Coat

Trowel or spray applied, fiber reinforced, polymer modified, cement based concentrate. Refer to Conproco Exterior Wall Systems. **Do not add K88 Admixture.**

Where to Use

Combine scratch and brown coats of traditional stucco systems into one coat stucco base and finish.

How to Apply

Plastering Trowel, Pool Trowel

Coverage/Yield

50 ft.²/16050 lbs. @ 3/8 inch.

Packaging

50 lbs. paper bags



Exterior Wall Systems

Conpro Stucco

Trowel or spray applied, traditional Portland cement stucco. Refer to Conproco Exterior Wall Systems. Use 1 quart of K88 or Color K88 per 50 lb bag.

Where to Use

For a natural appearing, decorative texture coating on concrete, masonry and curtain wall construction.

How to Apply

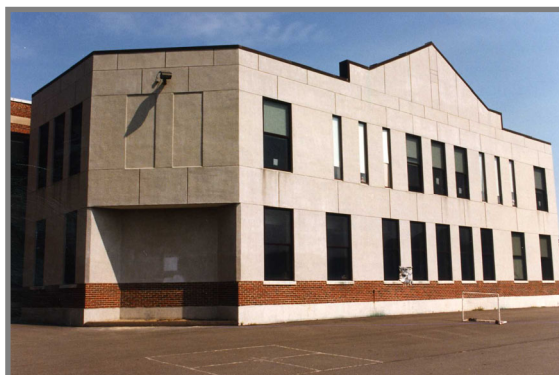
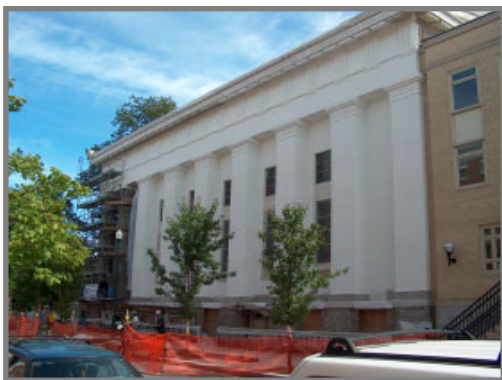
Plastering Trowel, Pool Trowel

Coverage/Yield

50 ft.²/50 lbs @ 1/8 inch.

Packaging

50 lb paper bag



SPRAY AND PUMPING EQUIPMENT

CEMENT BASED MATERIALS

	Hopper Gun	Rotor/Stator Size 3	Peristaltic (Carousel)	Rotor/Stator Size 6	Piston
Forment®	-	✓	✓	✓	✓
Gun Shot LPS	-	✓	✓	✓	-
Plastermix	✓	✓	✓	✓	-
ISR Ag	-	-	-	-	✓
Conpro One Shot 2C	-	✓	✓	✓	-
Elastideck	✓	✓	✓	✓	-
Structural Skin®	-	✓	✓	✓	-
Conpro One Coat	-	✓	✓	✓	-
Conpro Stucco	✓	✓	✓	✓	-
Foundation Coat	-	✓	✓	✓	-
Conpro Super Seal	✓	✓	✓	✓	-

Manufacturer	Type	Telephone	Web Address
Marshalltown	Hopper Guns	800.888.0127	www.marshalltown.com
Hy-Flex	Rotor/Stator	866.849.6246	www.hyflexcorp.com
Quikspray	Peristaltic	419.732.2611	www.quikspray.com
ChemGrout	Rotor/Stator & Piston	708.354.7112	www.chemgrout.com
Reed	Gunitite/Shotcrete	888.779.7333	www.reedmfg.com

The gallons per minute volume of a rotor/stator pump is determined by the pump size (i.e. size 6 has a larger capacity than size 3).

The pressure capacity of a pump is determined by the number of stages.

Thicker materials and longer distances require higher pressure.

SPRAY AND PUMPING EQUIPMENT

LIQUIDS AND COATINGS

	Low Pressure	Airless-tip size 0.011-0.015	Airless-tip size 0.019-0.021	Airless-tip size 0.041-0.047
Conpro Start	✓	✓	-	-
ECB	-	-	-	✓
Conpro Primer	✓	✓	-	-
Conpro Shield MX	✓	-	-	-
M3P	-	-	✓	-
M3P-X	✓	✓	-	-
Conpro Lastic	-	-	-	✓
Color Coat	-	-	✓	-
Super Color Stain	-	-	✓	-

Manufacturer	Type	Telephone	Web Address
R.E. Chapin MFG	Low pressure spray	800.950.4458	www.chapinmfg.com
Titan Tool Inc.	Airless sprayers	800.526.5362	www.titantool.com
Binks	Airless sprayers	888.992.4657	www.binks.com
Graco Inc.	Airless sprayers	612.623.6000	www.graco.com

The capacity of airless spray equipment is determined by the tip size. Given the proper tip size the manufacture of the equipment will be able to recommend specific equipment.

TROWEL AND FLOAT GUIDE

	Plastering Trowel	Finishing Trowel	Pool Trowel	Margin Trowel	Floats
Conpro Set	-	-	-	√	Red Sponge
Quick Shot	-	-	-	√	Red Sponge
ISR VO	-	-	-	√	Red Sponge
ISR CM	-	-	-	√	Red Sponge
Plastermix	√	-	√	-	Green Sponge
Gun Shot LPS	√	-	√	-	Mag Float/Broom
ISR Ag	-	√	√	-	Mag Float/Broom
Conpro One Shot 2C	-	√	√	-	-
Elastideck	-	√	√	-	-
Matrix	-	-	-	√	Red Sponge
Matrix TR	-	-	-	-	Red Sponge
Structural Skin	√	-	-	√	-
Conpro One Coat	√	-	√	-	-
Conpro Stucco	√	-	√	-	Green Sponge
Foundation Coat	√	-	√	-	-

The above chart provides choices for recommended application and finishing tools.

Plastering Trowels	11 x 4-1/2 to 14 x 4-1/2 ins.	Size determined by area to be finished
Finishing Trowel	12 x 4 to 20 x 5 ins.	Size determined by area to be finished
Pool Trowel	14 x 3 to 14 x 4 ins.	Easy to use for those less skilled
Margin Trowel	5 x 1-1/2 to 8 x 4 ins.	Use to place small repairs
Red Sponge	Various	Use for tight, flat finishes
Green Sponge	Various	Use for sand finishes

PRODUCT CURING TIME GUIDE - The curing times are provided to give guidance only.

Product	Minimum Temperature	Minimum To 55°	55° - 70°F	70°F and Above	Minimum Time To Coat*
Conpro Start	40°F	18 Hours	12 Hours	6 Hours	Refer to Temperature
ECB	40°F	8 Hours	1 Hours	30 Minutes	Dry to Touch
Conpro Primer	40°F	8 Hours	1 Hours	30 Minutes	Orange Color
Conpro Set	40°F	12 Hours	4 Hours	2 Hours	3 to 5 Days
Quick Shot	40°F	8 Hours	2 Hours	1 Hour	3 to 5 Days
ISR VO	40°F	12 Hours	4 Hours	2 Hours	3 to 5 Days
ISR Ag	40°F	48 Hours	36 Hours	24 Hours	3 to 5 Days
ISR CM	40°F	24 Hours	18 Hours	12 Hours	3 to 5 Days
Plastermix with K88	40°F	12 Hours	4 Hours	2 Hours	3 to 5 Days
Forment® (remove	40°F	72 Hours	48 Hours	48 Hours	3 to 5 Days
Gun Shot LPS	40°F	12 Hours	8 Hours	4 Hours	3 to 5 Days
Conpro One Shot 2C	40°F	24 Hours	12 Hours	6 Hours	3 to 5 Days
Conpro Shield MX	45°F	24 Hours	18 Hours	12 Hours	Dry to Touch
M3P	45°F	24 Hours	18 Hours	12 Hours	Dry to Touch
M3P Overcoat	45°F	24 Hours	18 Hours	12 Hours	Dry to Touch
Conpro Lastic	45°F	24 Hours	18 Hours	12 Hours	Dry to Touch
Color Coat	45°F	24 Hours	18 Hours	12 Hours	Dry to Touch
Super Color Stain	45°F	24 Hours	18 Hours	12 Hours	Dry to Touch
Terra Coat	45°F	24 Hours	18 Hours	12 Hours	Dry to Touch
Elastideck	45°F	24 Hours	18 Hours	12 Hours	Dry to Touch

CURING TIME - THE MINIMUM TIME A PRODUCT MUST BE PROTECTED FROM RAIN OR PHYSICAL CONTACT.
***MINIMUM TIME TO COAT** - THE MINIMUM TIME A PRODUCT MUST CURE BEFORE APPLYING AN ACRYLIC COATING OR A SECOND APPLICATION OF THE SAME COATING.

PRODUCT CURING TIME GUIDE - The curing times are provided to give guidance only.

Product	Minimum Temperature	Minimum To 55°	55° - 70°F	70°F and Above	Minimum Time To Coat*
Matrix	40°F	24 Hours	18 Hours	12 Hours	3 to 5 Days
Matrix TR	40°F	24 Hours	18 Hours	12 Hours	3 to 5 Days
Terracotta Finish	40°F	24 Hours	12 Hours	6 Hours	Dry to Touch
Structural Skin	40°F	12 Hours	3 Hours	2 Hours	24 Hours
Conpro One Coat	40°F	24 Hours	18 Hours	12 Hours	24 Hours
Conpro Stucco	40°F	12 Hours	8 Hours	4 Hours	24 Hours
Foundation Coat	40°F	12 Hours	3 Hours	2 Hours	24 Hours
Conpro Super Seal	40°F	12 Hours	6 Hours	2 Hours	Dry to Touch

CURING TIME - THE MINIMUM TIME A PRODUCT MUST BE PROTECTED FROM RAIN OR PHYSICAL CONTACT.

***MINIMUM TIME TO COAT** - THE MINIMUM TIME A PRODUCT MUST CURE BEFORE APPLYING AN ACRYLIC COATING OR A SECOND APPLICATION OF THE SAME COATING.

ECB Technical Data

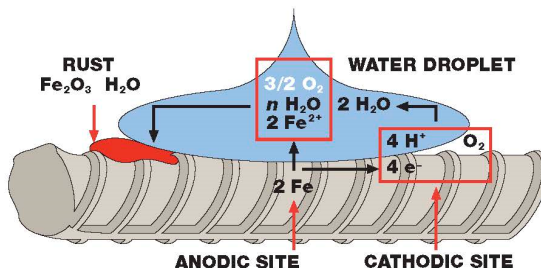
DEFINITION OF CORROSION ON REINFORCING STEEL

PROBLEM

The electrochemical deterioration of metal due to the reaction with its environment.

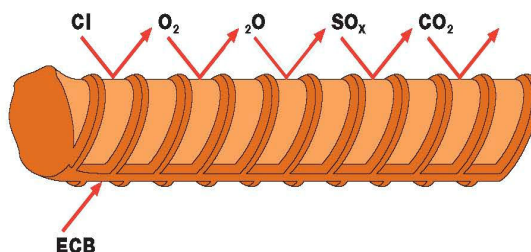
SOLUTION

ECB combats corrosion in using a unique, three-tiered system.



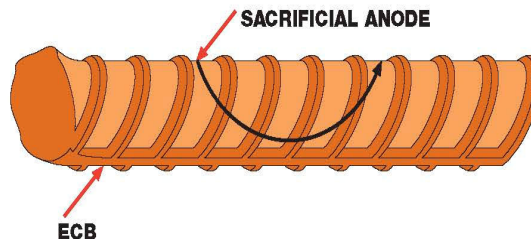
BARRIER

ECB forms an impervious membrane to protect rebar from water, chlorides, oxygen, and carbon dioxide. This function is similar to epoxy coatings.



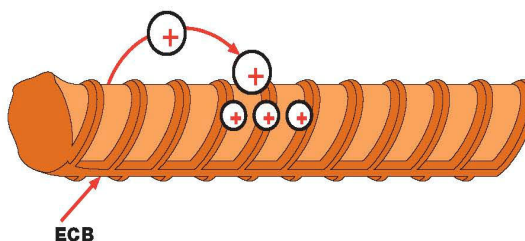
SACRIFICIAL

ECB provides passive cathodic protection which, if needed, donates electrons (sacrificial anode) to stop corrosion. This function is similar to zinc-rich primers.



CHEMICAL

ECB provides chemical protection that works concurrently with the passive cathodic protection. Ions produced during the sacrificial process migrate towards an establishing cathode. At the cathode they react and deposit a protective layer which obstructs further cathodic reactions, arresting corrosion. This function is similar to migratory inhibitors.



For more information on ECB request the full Technical Bulletin. Email customer support at orders@conproco.com