

1608 Chestnut Street

Philadelphia, PA

CONTRACTOR – Mara Restoration, Oreland, PA
DISTRIBUTOR – TB Philly, Inc., Phoenixville, PA

Stone Repair
Fall 2014

PROJECT TASK

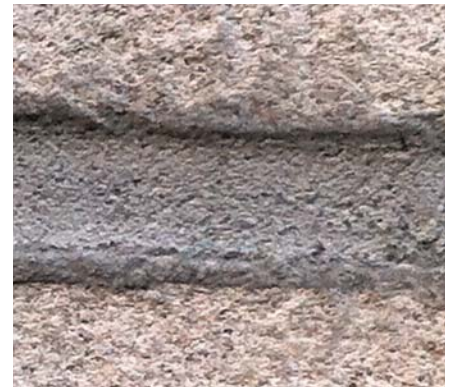
Repoint a historic art deco commercial building.

PROJECT SOLUTION

Use of a custom matched, pre-blended traditional mortar.

PRODUCTS

RePoint



All photographs were taken "after" the work was completed.



PROJECT HISTORY

1608 Chestnut Street was constructed in 1927 by the noted design/build firm William Steele and Sons. The 3 story limestone building still features all of the original architectural details, including Art Deco and Adamesque motifs in limestone and cast bronze, and a distinct recessed entryway. The property first opened as a Jackson and Moyer men's clothing store, and currently houses Uniqlo.

The property is part of the National Register Center City West Commercial Historic District, and was added to the Philadelphia Register of Historic Places in 1985.

As part of the conversion to Uniqlo, Mara Restoration cleaned and repointed the façade. Conproco's RePoint was chosen as the repointing mortar. RePoint is a traditional Portland, lime and sand mix. It contains no polymers or additives, and comes packaged as a just-add-water mix.

This greatly reduced labor costs while ensuring batch quality. Mara had a custom color match done to the original mortar, which Conproco makes available even for single pail jobs. RePoint is available in Type O and Type N.